



...acoustically designed  
for a sound investment

## SD-VTA40X2 Vacuum Tube Amplifier

### Features:

- Three selectable inputs
- Vacuum tube design
- 40W x 2 Output power
- Volume control
- Left & right front panel power meters
- PTC Thermistor with overload protection
- Auto protection for tubes on power loading

### Contents Include:

- SD-VTA40X2
- 1 owner's manual
- 1 Stereo audio cable
- 1 3.5mm Plug to stereo audio cable
- 1 Power cord

### Description:

The Symphonic Designs™ SD-VTA40X2 Tube Amplifier has been designed with the quality conscious custom home integrator in mind. While most devices that formerly used vacuum tube design have been replaced by solid state electronics, the vacuum tube amplifier is still widely desirable for its smooth, warm sound.

Housed in an attractive case with the vacuum tubes exposed yet protected, the SD-VTA40X2 is sure to be a conversation piece in every home theater system. With three line inputs, the SD-VTA40X2 is perfect for use in selecting between DVD players, satellite receivers, CD players and/or audio tuners. This unit fully embraces the classic technology of tubular amplification for superior sound.



### Specifications:

<b>Output Power</b>	40W x 2
<b>Frequency Response</b>	10 Hz - 100 KHz +/-1.5 dB
<b>Harmonic Distortion</b>	≤0.2%
<b>Signal To Noise Ratio</b>	≥73 dB
<b>Input Sensitivity</b>	1V +/-25%
<b>Input Impedance</b>	≥100K Ω
<b>Output Impedance</b>	4Ω, 8Ω
<b>Power Supply</b>	100 - 120 VAC / 50-60 Hz
<b>Dimensions</b>	15"W x 6.75"H x 12"D
<b>Vacuum Tubes</b>	6L6G x 4 / 12AU7 x 4
<b>Input Connections</b>	L&R RCA x 3
<b>Output Connections</b>	Banana Plug Speaker Terminals
<b>Controls</b>	Power, Input Select, Volume Control

[www.symphonicdesigns.net](http://www.symphonicdesigns.net)

[sales@symphonicdesigns.net](mailto:sales@symphonicdesigns.net)

Distributed By: North American Cable Equipment Inc. (800) 688-9282 Fax: (800) 230-1793



...acoustically designed  
for a sound investment

## SD-VTAIB18X2 Vacuum Tube Amplifier With iPod Dock

### Features:

- Five selectable inputs
- Vacuum tube design
- Supports A2DP Bluetooth
- 30 Pin iPod dock
- 18W x 2 Output power
- Volume control
- Left & right front panel power meters
- PTC Thermistor with overload protection
- Auto protection for tubes on power loading

### Contents Include:

- SD-VTAIB18X2
- 1 owner's manual
- 1 Remote control with battery
- 1 Stereo audio cable
- 1 3.5mm Plug to stereo audio cable
- 1 Power cord



\*iPod is a trademark of Apple Computer  
iPod Not Included

### Description:

The Symphonic Designs™ SD-VTAIB18X2 Tube Amplifier has been designed with the quality conscious custom home integrator in mind. While most devices that formerly used vacuum tube design have been replaced by solid state electronics, the vacuum tube amplifier is still widely desirable for its smooth, warm sound.

Housed in an attractive case with the vacuum tubes exposed yet protected, the SD-VTAIB18X2 is sure to be a conversation piece in every home theater system. With four line inputs, and one Bluetooth wireless input the SD-VTAIB18X2 is perfect for use in selecting between and iPod, DVD players, satellite receivers, CD players and/or audio tuners. This unit combines the classic technology of tubular amplification with the modern technology of the iPod.

### Specifications:

<b>Output Power</b>	18W x 2
<b>Frequency Response</b>	10 Hz - 80 KHz +/-1.5 dB
<b>Harmonic Distortion</b>	≤0.2%
<b>Signal To Noise Ratio</b>	≥73 dB
<b>Input Sensitivity</b>	1 V +/-25%
<b>Input Impedance</b>	≥4K Ω
<b>Output Impedance</b>	4Ω, 8Ω
<b>Power Supply</b>	100 - 120 VAC / 50-60 Hz
<b>Dimensions</b>	15"W x 6.75"H x 12"D
<b>Vacuum Tubes</b>	6L6G x 2 / 12AU7 x 4
<b>Input Connections</b>	L&R RCA x 3 iPod 30 pin dock x 1 Bluetooth A2DP wireless input x 1
<b>Output Connections</b>	Banana Plug Speaker Terminals
<b>Controls</b>	Power, Input Select, Volume Control

[www.symphonicdesigns.net](http://www.symphonicdesigns.net)

[sales@symphonicdesigns.net](mailto:sales@symphonicdesigns.net)

Distributed By: North American Cable Equipment Inc. (800) 688-9282 Fax: (800) 230-1793



*...acoustically designed  
for a sound investment*

## SD-AA2-E 6 1/2" In Wall Recessed Speakers

### Features:

- 6 1/2" In wall recessed speakers
- 50 Watts max power
- Polypropylene cone woofer with rubber surrounding
- 1" Mylar swivel tweeter
- 8 Ohm Impedance
- White grill, white baffle
- Paintable grill

### Contents Include:

- 1 pair SD-AA2-E In-Wall Speakers
- 1 Mounting Template
- 1 Owner's Manual



### Description:

The Symphonic Designs™ series of recessed speakers have been designed with the quality conscious custom home integrator in mind. Paintable grills and a low profile design make the Symphonic Designs™ series of recessed speakers perfect for a wide variety of custom installations. This also makes them a perfect choice of speakers to keep on every installation vehicle as a profitable up-sell item.

The SD-AA2-E In-Wall Speakers are manufactured to operate with any quality amplifier designed for use with a minimum 4-ohm impedance load, but compatible with 8-ohm receivers/amplifiers. The SD-AA2-E In-Wall Speakers have a uniform (hemispherical) dispersion and do not require special orientation for quality sound. For music listening or home theater front sound, the speakers can be placed in the wall (to the left and to the right of the stereo system or TV), but closer to the main listening area. For surround sound the speakers can be placed in the wall to the left and right and directly behind the main listening area. The SD-AA2-E has a unique pivoting tweeter plate which directs sound toward or away from the listening area to achieve a desired effect.

### Specifications:

<b>Power</b>	20 to 100 watts
<b>Rated Input Power</b>	25 watts per unit
<b>Rated Maximum Input Power</b>	50 watts per unit
<b>Impedance</b>	6 ohms nominal, 4 ohms minimum
<b>Response</b>	60Hz to 20kHz
<b>Sensitivity</b>	89dB
<b>Distortion</b>	5% maximum
<b>Woofer</b>	6.5" mineral filled polypropylene cone woofer with rubber surround
<b>Tweeter</b>	0.75" coaxial pivoting soft dome
<b>Wall Cutout Dimensions</b>	7 5/16" x 10 3/4"

[www.symphonicdesigns.net](http://www.symphonicdesigns.net)

[sales@symphonicdesigns.net](mailto:sales@symphonicdesigns.net)

Distributed By: North American Cable Equipment Inc. (800) 688-9282 Fax: (800) 230-1793



*...acoustically designed  
for a sound investment*

## SD-AAR2-E 6 1/2" In Ceiling Recessed Speakers

### Features:

- 6 1/2" In ceiling recessed speakers
- 50 Watts max power
- Polypropylene cone woofer with rubber surrounding
- 1" Mylar swivel tweeter
- 8 Ohm Impedance
- White grill, white baffle
- Paintable grill

### Contents Include:

- 1 pair SD-AAR2-E In-Ceiling Speakers
- 1 Mounting Template
- 2 Paint Plugs
- 1 Owner's Manual



### Description:

The Symphonic Designs™ series of recessed speakers have been designed with the quality conscious custom home integrator in mind. Paintable grills and a low profile design make the Symphonic Designs™ series of recessed speakers perfect for a wide variety of custom installations. This also makes them a perfect choice of speakers to keep on every installation vehicle as a profitable up-sell item.

The SD-AAR2-E In-Ceiling Speakers are manufactured to operate with any quality amplifier designed for use with a minimum 4-ohm impedance load, but compatible with 8-ohm receivers/amplifiers. The SD-AAR2-E In-Ceiling Speakers have a uniform (hemispherical) dispersion and do not require special orientation for quality sound. For music listening or home theater front sound, the speakers can be placed in the ceiling (to the left and to the right of the stereo system or TV), but closer to the main listening area. For surround sound the speakers can be placed in the ceiling to the left and right and directly behind the main listening area. The SD-AAR2-E has a unique pivoting tweeter plate which directs sound toward or away from the listening area to achieve a desired effect.

### Specifications:

<b>Power</b>	10 to 100 watts
<b>Rated Input Power</b>	30 watts per unit
<b>Rated Maximum Input Power</b>	60 watts per unit
<b>Impedance</b>	6 ohms nominal, 4 ohms minimum
<b>Response</b>	60Hz to 20kHz
<b>Sensitivity</b>	89dB
<b>Distortion</b>	5% maximum
<b>Woofer</b>	6.5" black polypropylene cone woofer with rubber surround
<b>Tweeter</b>	0.75" coaxial pivoting soft dome
<b>Wall Cutout Dimensions</b>	8 15/16" Diameter x 2 11/16" Depth
<b>Ceiling Cutout Dimensions</b>	7 5/8" Diameter

[www.symphonicdesigns.net](http://www.symphonicdesigns.net)

[sales@symphonicdesigns.net](mailto:sales@symphonicdesigns.net)

Distributed By: North American Cable Equipment Inc. (800) 688-9282 Fax: (800) 230-1793



*...acoustically designed  
for a sound investment*

## **SD-502 2-Piece Satellite Series Indoor/Outdoor Speaker System**

### **Features:**

- 5" Cabinet speakers
- 2 Way multi-purpose indoor/outdoor speaker
- 5 1/4" Polypropylene with rubber surrounding
- 5/8" Liquid cooled polycarbonate
- Perforated white grill
- White molded plastic finish

### **Contents Include:**

- 1 pair SD-502 Satellite Series Speakers
- 1 pair mounting brackets
- 2 pairs of knobs
- 2 wire sets
- 1 owner's manual



### **Description:**

The Symphonic Designs™ Satellite Series of speakers have been designed with the quality conscious custom home integrator in mind. Designed for indoor and outdoor use, the satellite series speakers are perfect for a wide variety of custom installations. This also makes them a perfect choice of speakers to keep on every installation vehicle as a profitable up-sell item.

The SD-502 Satellite Speakers are manufactured to operate with any quality amplifier designed for use with an 8-ohm impedance load. Because of their well-behaved off-axis response and excellent dispersion your new Symphonic Designs™ Satellite Speakers are less critical to position than most loudspeakers. Often simply placing them where they best fit into the decoration scheme is all that is necessary for exceptional performance.

### **Specifications:**

<b>Power</b>	Use with 5 to 130 watt amplifier
<b>Rated Input Power</b>	20 watts per unit
<b>Rated Maximum Input Power</b>	40 watts per unit
<b>Impedance</b>	8 ohms average
<b>Response</b>	50Hz to 22kHz
<b>Sensitivity</b>	89dB
<b>Distortion</b>	5% maximum
<b>Woofer</b>	5.25" polypropylene with rubber surround
<b>Tweeter</b>	5/8" liquid cooled polycarbonate
<b>Crossover</b>	First order high-pass

[www.symphonicdesigns.net](http://www.symphonicdesigns.net)

[sales@symphonicdesigns.net](mailto:sales@symphonicdesigns.net)

**Distributed By: North American Cable Equipment Inc. (800) 688-9282 Fax: (800) 230-1793**



...acoustically designed  
for a sound investment

## SD-SS10 10" Active Subwoofer



### Features:

- **Power Switch** – The power switch has 3 positions: OFF, AUTO, ON. AUTO position instructs the SD-SS10 to remain in STANDBY mode until the unit receives an input signal. If the subwoofer does not receive an input signal for approximately 10 minutes, it will switch to standby mode until it receives a further signal.
- **Phase Switch** – This switch toggles the PHASE of the subwoofer with respect to the main speakers. If the subwoofer is out of phase with the main speakers, bass response is at a reduced performance level and may sound “weak”. When all speakers are in phase, full frequency response is at an optimal level.
- **Level** – This control adjusts the subwoofers MASTER output level. Turn clockwise to INCREASE and counter-clockwise to DECREASE the level.
- **Crossover** – The Crossover control adjusts the SD-SS10’s low-pass frequency filtering for subwoofer output. Available low-pass settings are 50Hz, 80Hz, 120Hz, and 200Hz
- **HI-LEVEL IN Jacks** – These MDP binding posts are for direct connection of speakers or speaker output from an external amplifier. These inputs are typically used for connecting to a system that does not have “pre-out” or line level outputs available.
- **HI-LEVEL OUT Jacks** - These MDP binding posts are for direct connection to the main system speakers.



### Specifications:

<b>Rated Input Power</b>	50 watts per unit
<b>Rated Maximum Input Power</b>	100 watts per unit
<b>Impedance</b>	4 ohms nominal, 4 ohms minimum
<b>Response</b>	50Hz to 300Hz
<b>Sensitivity</b>	89dB
<b>Distortion</b>	5% maximum
<b>Woofers</b>	10" Long-throw
<b>Dimensions</b>	14.5" x 14.5" x 15"

## SD-SC525 Center Channel Speaker

### Features:

- Dual 5 1/4" Paper cone woofers with rubber edge voice coil
- 13mm Mylar tweeter
- 17.4"W x 6.5"D x 6.5"H



[www.symphonicdesigns.net](http://www.symphonicdesigns.net)

[sales@symphonicdesigns.net](mailto:sales@symphonicdesigns.net)

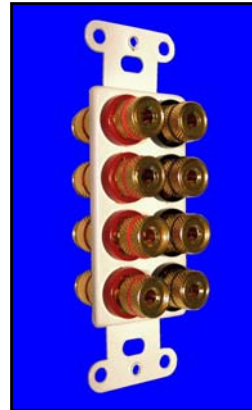
Distributed By: North American Cable Equipment Inc. (800) 688-9282 Fax: (800) 230-1793



...acoustically designed  
for a sound investment

# Speaker Installation Accessories

## Banana Post Wall Plate Inserts

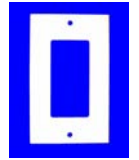


AT-BP2W 2 Posts

AT-BP4W 4 Posts

AT-BP8W 8 Posts

White Wall Plate  
Included



### Gold, Screwdown Compression Banana Plugs



CT-BANPLUG-SC-RED Red Band  
CT-BANPLUG-SC-BLK Black Band

### Gold, Setscrew Style Banana Plugs



CT-BANPLUG-ST-RED Red Body  
CT-BANPLUG-ST-BLK Black Body



## CT-BAN-HTWP Dual Gang Multi Channel Home Theater Wall Plate

- Front Left & Right Banana Jacks
- Front Center Channel Banana Jacks
- Rear Left & Right Banana Jacks
- Rear Center Channel Banana Jacks
- Subwoofer 1 & Subwoofer 2 RCA Jacks
- Dual gang
- White plastic with convenient, clearly marked connections
- Perfect for professional custom home theater installations

## Keystone Style Binding Post Snap In Modules



CT-AUDINS-IV/B Ivory plastic, black band  
CT-AUDINS-IV/R Ivory plastic, red band  
CT-AUDINS-W/B White plastic, black band  
CT-AUDINS-W/R White plastic, red band

## Single Gang Keystone Style Wall Plates

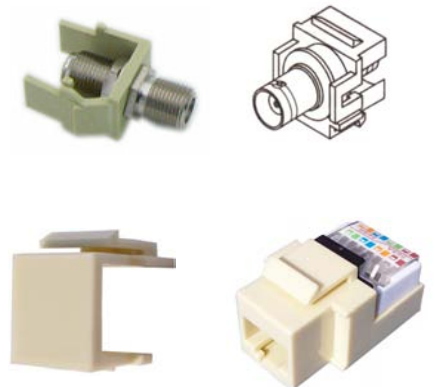


CT-KSWP1-\* One snap in cavity  
CT-KSWP2-\* Two snap in cavities  
CT-KSWP3-\* Three snap in cavities  
CT-KSWP4-\* Four snap in cavities  
CT-KSWP6-\* Six snap in cavities

- Available in white or ivory
- Color matched mounting screws included
- Smooth finish, high impact ABS construction

## Keystone Style Snap-In Modules

310-410\* BNC Insert Almond, Ivory and White  
CT-FINS-\* F Female Insert Almond, Ivory and White  
310-417\* F Blank Insert Almond, Ivory and White  
CT-BLANK-\* Blank Insert Almond, Ivory and White  
310-452\* S-Video Insert Almond, Ivory and White  
310-461\* RCA Insert, Red band  
310-462\* RCA Insert, Black band  
310-463\* RCA Insert, White band  
310-464\* RCA Insert, Yellow band  
310-106\* RJ-11 6x6, almond, ivory, white or black  
CT-C5INS-\* Cat5e Snap In  
310-110\*\* Cat 5e Snap In  
310-120\*\* Cat 5e Snap In, 90°  
Cat 5 Snap in modules available in Almond, Black, Blue, Green, Ivory, Orange, Red, White & Yellow



[www.symphonicdesigns.net](http://www.symphonicdesigns.net)

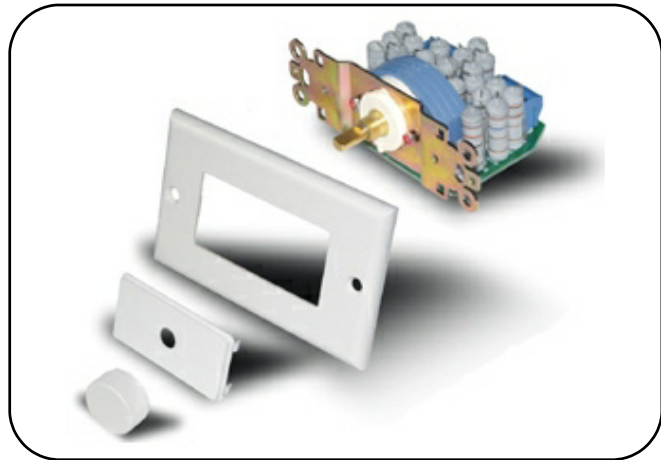
[sales@symphonicdesigns.net](mailto:sales@symphonicdesigns.net)

Distributed By: North American Cable Equipment Inc. (800) 688-9282 Fax: (800) 230-1793



...acoustically designed  
for a sound investment

## AT Series Volume Controls



### Features:

- Includes volume control, wall plate, volume control knob & phillips head painted wall plate screws
- 35 & 100 Watt models available
- Available in white or ivory
- 1 Pair & 4 pair models available

### Description:

The Symphonic Designs™ Series of volume controls have been designed with the quality conscious custom home integrator in mind. The Cabletronix AT-VC\* series of Impedance Matching Stereo Volume Controls connect between the speaker level output of an amplifier, receiver, or speaker selector and a pair of speakers. These are high quality stereo autoformers designed for wide range frequency response at all volume levels. The AT-VC\* connection terminals allow for simple and secure wire connections. A multiple room model provides easy impedance adjustment when multiple speakers are connected to a single amplifier. The AT-VC100 is rated at 100 watts and is designed to support one pair of speakers. The AT-VC35 and AT-VC4100 are rated at 35 & 100 watts respectively, and can control up to 4 pairs of speakers.

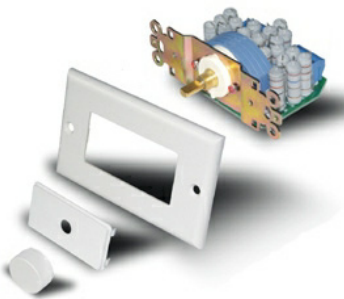


35 Watt 1 to 4 Pair  
Speaker Volume  
Control

AT-VC35W White  
AT-VC35IV Ivory

### Specifications:

<b>Power Rating</b>	35 or 100 watts depending upon model
<b>Frequency Response</b>	20Hz to 20kHz
<b>Total Attenuation</b>	42 dB maximum
<b>Depth:</b>	2" to 2.5" behind plate depending upon model
<b>Mounting</b>	Fits nearly all standard single-gang junction boxes and plaster rings



100 Watt 1 Pair  
Speaker Volume  
Control

AT-VC100W White  
AT-VC100IV Ivory



100 Watt 1 to 4 Pair  
Speaker Volume  
Control

AT-VC4100W White  
AT-VC4100IV Ivory





...acoustically designed  
for a sound investment

# Television Mounting Stands

## SD-3SBCAVS

### Three Shelf Heavy Duty Television Stand

#### Features:

- Top shelf capacity: 200 lbs.
- Holds most TVs 42" to 60"
- Stylish design
- Aluminum alloy frame
- Three wood shelves
- Shelf thickness 20mm (0.79")
- Silver frame with black shelves
- Convenient wire management
- 20"H x 39 1/4"W x 17 5/8"D

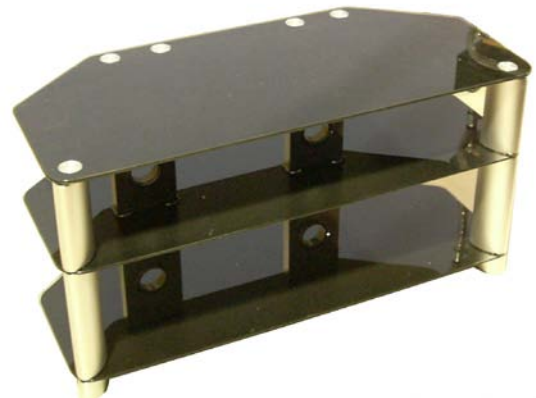


## SD-3SBGAVS

### Three Shelf Glossy Composite Television Stand

#### Features:

- Top shelf capacity: 75 lbs.
- Holds most TVs up to 42"
- Stylish design
- Aluminum alloy frame
- Three composite shelves
- Silver frame with black shelves
- Convenient wire management
- 19 5/8"H x 40 3/4"W x 19 3/4"D



## SD-4SCGAVS

### Four Shelf Glass Television Stand

#### Features:

- Top shelf capacity: 80 lbs.
- Holds most TVs 42" to 60"
- Stylish design
- Aluminum alloy frame and base
- Four Glass shelves
- Shelf thickness 8mm (0.31")
- Silver frame with white base
- 23 11/16"H x 47 1/4"W x 18 1/4"D
- 21"H without wheels



[www.symphonicdesigns.net](http://www.symphonicdesigns.net)

[sales@symphonicdesigns.net](mailto:sales@symphonicdesigns.net)

Distributed By: North American Cable Equipment Inc. (800) 688-9282 Fax: (800) 230-1793