

Pan - Tilt - Zoom Camera Accessories

Features:

- Compatible with the Securitytronix ST-PTZIR530-36 and many other cameras
- Auto search and track on moving objects with adjustable precision
- Independent OSD menu to program camera, up to 4 alarm inputs
- Auto actions such as tracking, presets, cruise, patterns etc on power up
- Precision motor providing stable and precise performance
- Pan and tilt speeds adjustable based on zoom timing
- Multiple protocols are supported such as Pelco D/P with adjustable baud rates
- Auto return to home position/preset with continual tracking after a programmable interval
- Camera must be capable of compound commands (ex. Pan & tilt smoothly at the same time)
- Camera must be capable of a minimum 240 degree per second pan speed



Description:

The ST-PTZ-ATB is a professional grade, cost-effective tracking solution for high-speed PTZ cameras. It enables object-tracking functions on normal PTZ cameras. The unit is highly compatible with many PTZ cameras with no affect on the cameras' existing functions. The ST-PTZ-ATB uses an independent OSD (On Screen Display) menu, supports up to 4 alarm inputs, performs auto search and track on a moving object, and supports auto return to the home position or a preset.

Functions:

OBJECT TRACKING – In auto tracking mode, a PTZ camera can track a moving object in the target area with auto pan, tilt and zoom for smart, unattended surveillance. The ST-PTZ-ATM can enable a PTZ camera to track a moving object.

ALARM and TRACK – The ST-PTZ-ATM receives alarm signals and as result it enables the PTZ camera to track a moving object.

TRACKING DURING CRUISE – The ST-PTZ-ATB can enable tracking function for a PTZ camera when the camera is in cruise mode. When there is a moving object in the camera view the camera will follow the object with auto pan, tilt and zoom. The PTZ camera will return to cruise mode when there is no moving object.

PTZ Protocol Control Options ST-485BUS/8 & ST-485BUS/16 RS485 Bus Distributors



Specifications:

Power Supply:	DC12V 2A
Power Consumption:	Less than 24W
Receiving Controlling Mode:	RS485, RS232
Transmitting Mode:	RS485
Max Transmitting Distance:	1200m (0.5mm Twisted Pair)
Operating Temperature:	32°F ~ 122°F
Storage Temperature:	14°F ~ 122°F
Dimensions:	430x210x44mm
Weight:	2.85kg

Features:

- TVS 1500W lightning proof & 1500mA surge proof
- Highly insulated input and output channels
- RS485 control, baud rate 2400, 4800, 9600bps
- 16-channel outputs, each channel supports transmitting distance of 1200m (0.56mm twisted-pair wire)
- 4, 8, 12 channels output optional

ST-DR-AD300 1 Output Channel ST-DR-AD300/16 16 Output Channels Coaxial Converters

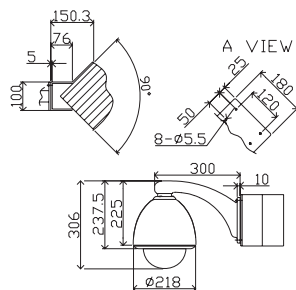
Features:

- Receiving Interface: Built-in RS485/RS422, Manchester, BI-Phase Code
- Transmitting output (BNC, with video and controlling data)
- With power supply / receiving red LED and signal transmitting green LED
- Multi-protocol options available by setting DIP switches such as: Pelco-D, Pelco-P, Kalatel, Panasonic, VCL, Bosch, American Dynamics and more...
- 120ohm jumper in receiving interface
- 400V video lightning resistant

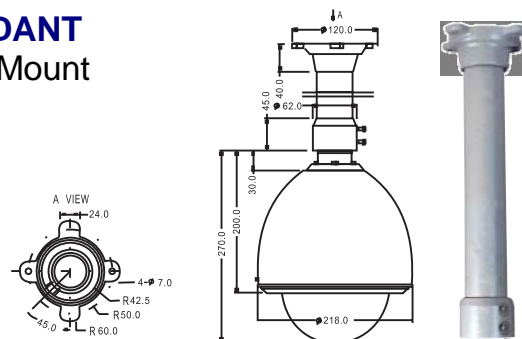


PTZ Camera Mounting Bracket

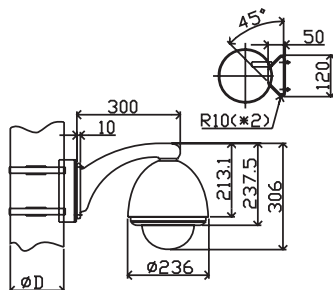
BE-CORNER Corner Mount



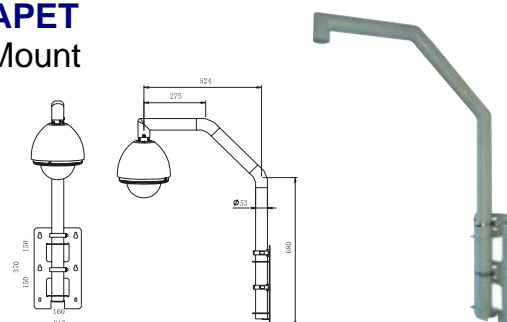
BE-PENDANT Pendant Mount



BE-POLE Pole Mount



BE-PARAPET Parapet Mount



ST-KB02

3-Axis Computerized Surveillance Controller

- 3 Axis joystick control, pan-tilt-zoom
- Variable speed for PTZ control
- LCD Screen with backlight
- Communication Port RS-485/RJ45
- Baud Rate 2400/4800/9600bps
- System Settings DIP Less OSD Software
- P/T/Z Control left/right: up/down
- Iris: up/down, Focus: far/near, Zoom: in/out
- Save/Call Preset/Tour/Pattern
- Joystick Three Axis (Left, Right, Zoom In/Out)



ST-KB03E

2-Axis Computerized Surveillance Controller

- Set the address range of the dome camera and the decoder: 0~64
- Control all functions of the dome camera such as Power ON/OFF
- To operate the pan/tilt of Speed Dome Camera moving in different speed lever
- Set or call the points of the dome camera, up to 64 cameras
- Manually or automatically control the dome camera
- Call the menu of the camera
- Manually control the focus, zoom and iris of the camera

