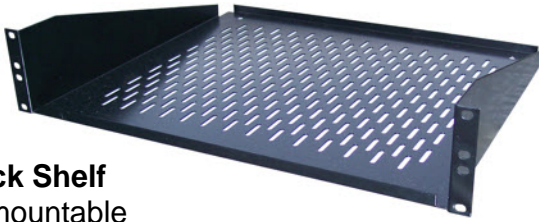


SHELF-SLT

2 Space Rack Shelf

- 19" Rack mountable
- 2 Rack spaces High (3.5")
- 15" Deep
- Slotted for superior ventilation
- Heavy duty to prevent sagging



CT-8PK-D12 8 Receiver Adjustable Rack Shelf Designed for DIRECTV D12 Receivers

Holds receivers up to
2 3/8"W x 7 13/16"D



CT-8PK 8 Receiver Adjustable Rack Shelf

Holds receivers up to
2 1/16"W x 10 1/4"D

CT-7PK-D12 7 Receiver Adjustable Rack Shelf

Holds receivers up to
2 7/16"W x 10 1/8"D

CT-6VRSK 6 Receiver Adjustable Rack Shelf

Holds receivers up to
2 3/4"W x 9"D

If the receiver is deeper than the number shown, it will still fit nicely into the shelf but will protrude from the front of the shelf.



CT-6ECHO PRO 6 Receiver Rack Shelf

- 19" Rack mountable
- Holds receivers 15 1/4"H x 1 7/8"W x 11 1/4"D
- Uses 10 Rack spaces
- Designed for Dish Network™ 301/311 receivers
- Slotted for superior ventilation
- Heavy duty to prevent sagging
- Assembled with 8 standard rack screws (not included)

Equipment Rack Casters

5W

Set of 4 non-locking commercial grade casters

5WR

Set of 4 non-locking fine floor casters

5WL

Set of 4 commercial grade casters (2 locking)

5WLR

Set of 4 locking fine floor casters (2 locking)



Custom configured Rack Interface Plates (CT-RIPU-1) Patent Pending



Features:

- Perfect for organizing all of your headend inputs and outputs in one convenient location on your equipment rack
- Custom made for each application
- Clearly labeled to save time and avoid confusion
- Can be rack mounted or mounted on the top back of a rack with a rear rail kit
- Quick turnaround
- Call us with your requirements for pricing

RIP Plates mount at the top of the back side of your equipment racks for convenient identification of all inputs and outputs.

